

第55回西日本ボウリング選手権大会



Oil Pattern Distance:	46 Feet	Reverse Brush Drop:	46 Feet	Oil Per Board:	50 uL
Forward Oil Total:	17.15 mL	Reverse Oil Total:	15.5 mL	Volume Oil Total:	32.65 mL
Forward Boards Crossed:	343 Boards	Reverse Boards Crossed:	310 Boards	Total Boards Crossed:	653 Boards

	Start	Stop	Loads	Speed	Crossed	Start	End	Feet	T.Oil
1	4L	4R	3	14	99	0.0	3.9	3.9	4950
2	8L	8R	2	14	50	3.9	7.8	3.9	2500
3	9L	9R	2	18	46	7.8	12.9	5.1	2300
4	10L	10R	2	18	42	12.9	18.0	5.1	2100
5	11L	11R	2	18	38	18.0	23.1	5.1	1900
6	12L	12R	2	18	34	23.1	28.2	5.1	1700
7	12L	12R	2	18	34	28.2	33.3	5.1	1700
8	2L	2R	0	26	0	33.3	42.0	8.7	0
9	2L	2R	0	30	0	42.0	46.0	4.0	0

Navigation: Forward Reverse More

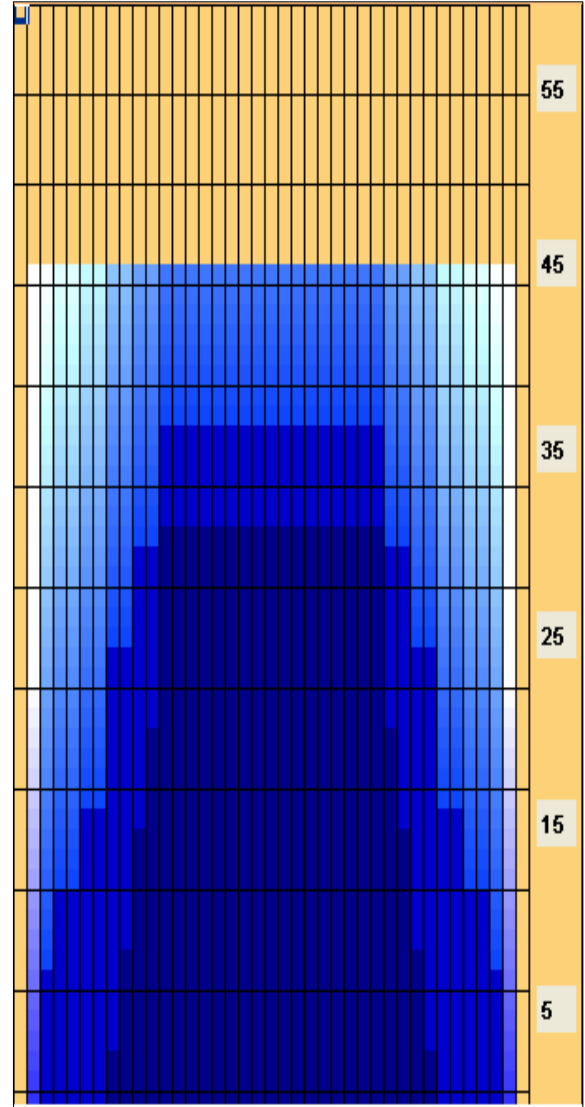
	Start	Stop	Loads	Speed	Crossed	Start	End	Feet	T.Oil
1	2L	2R	0	30	0	46.0	38.0	-8.0	0
2	12L	12R	2	22	34	38.0	31.8	-6.2	1700
3	10L	10R	2	18	42	31.8	26.7	-5.1	2100
4	8L	8R	1	18	25	26.7	24.2	-2.5	1250
5	8L	8R	2	18	50	24.2	19.1	-5.1	2500
6	6L	6R	2	14	58	19.1	15.2	-3.9	2900
7	4L	4R	2	14	66	15.2	11.3	-3.9	3300
8	3L	3R	1	14	35	11.3	9.4	-1.9	1750
9	2L	2R	0	10	0	9.4	0.0	-9.4	0

Navigation: Forward Reverse More

Conditioner:
Type In or Select One

TransferType:
Type In or Select One

- Forward
- Reverse
- Combined
- Buff



Item	3L-7L:18L-18R	8L-12L:18L-18R	13L-17L:18L-18R	18L-18R:17R-13R	18L-18R:12R-8R	18L-18R:7R-3R
Description	Outside Track:Middle	Middle Track:Middle	Inside Track:Middle	Middle: Inside Track	Middle:Middle Track	Middle:Outside Track
Track Zone Ratio	4.66	1.42	1	1	1.42	4.66

