

# 西日本シニア ( 2 )



<b>Oil Pattern Distance:</b> 44 Feet	<b>Reverse Brush Drop:</b> 39 Feet	<b>Oil Per Board:</b> 60 uL
<b>Forward Oil Total:</b> 14.58 mL	<b>Reverse Oil Total:</b> 14.1 mL	<b>Volume Oil Total:</b> 28.68 mL
<b>Forward Boards Crossed:</b> 243 Boards	<b>Reverse Boards Crossed:</b> 235 Boards	<b>Total Boards Crossed:</b> 478 Boards

	Start	Stop	Loads	Speed	Crossed	Start	End	Feet	T.Oil
1	2L	2R	2	10	74	0.0	1.4	1.4	4440
2	5L	5R	1	10	31	1.4	2.8	1.4	1860
3	7L	7R	3	10	81	2.8	7.0	4.2	4860
4	11L	11R	3	14	57	7.0	12.9	5.9	3420
5	2L	2R	0	18	0	12.9	24.0	11.1	0
6	2L	2R	0	22	0	24.0	33.0	9.0	0
7	2L	2R	0	30	0	33.0	44.0	11.0	0

Navigation: Forward Reverse More

	Start	Stop	Loads	Speed	Crossed	Start	End	Feet	T.Oil
1	2L	2R	0	30	0	44.0	35.0	-9.0	0
2	13L	13R	3	18	45	35.0	27.4	-7.6	2700
3	12L	12R	3	14	51	27.4	21.5	-5.9	3060
4	11L	11R	4	14	76	21.5	13.6	-7.9	4560
5	10L	10R	3	10	63	13.6	9.4	-4.2	3780
6	2L	2R	0	10	0	9.4	0.0	-9.4	0

Navigation: Forward Reverse More

Conditioner:  
Type In or Select  
One

TransferType:  
Type In or Select  
One

Forward



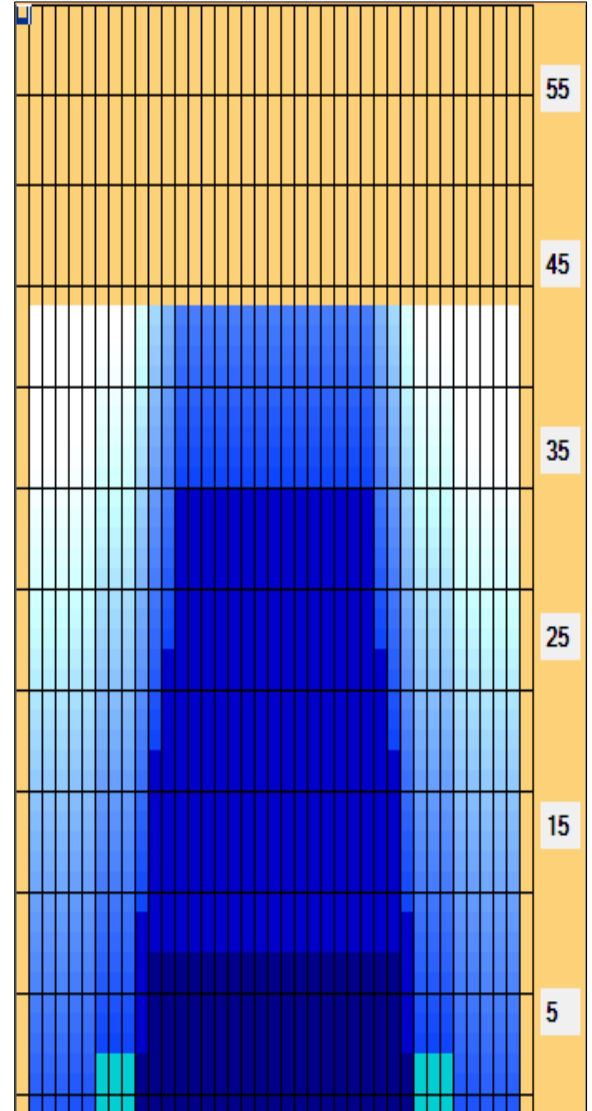
Reverse



Combined



Buff



TRANSFER BRUSH SYSTEM Program #2

Item	3L-7L:18L-18R	8L-12L:18L-18R	13L-17L:18L-18R	18L-18R:17R-13R	18L-18R:12R-8R	18L-18R:7R-3R
Description	Outside Track:Middle	Middle Track:Middle	Inside Track:Middle	Middle: Inside Track	Middle:Middle Track	Middle:Outside Track
Track Zone Ratio	6.88	1.96	1	1	1.96	6.88

